

What do you really want?



conservative

Honesty, Safety, Prosperity, Family.

This year when you vote there will be a chance to vote for someone different. People prepared to give you what you want and who are committed to implementing referendum decisions. People that want a better long term future for the country.

New Zealand is a simply wonderful country with an abundance of natural resources and places of outstanding beauty. We have great people who work hard and want to succeed but there is no question that we are under performing.

The time has come for a new initiative. In the last two decades both National and Labour governments ignored the wishes of the New Zealand people by refusing to implement referendum decisions. I don't want a country where the Government sees itself as being above the people and able to ignore them at its convenience. We need more representation and fewer political agendas.

We are also opposed to the never ending cycle of increased taxation and bigger spending. With three tax increases (the Emissions Trading Scheme, increased GST rates and cancellation of the ability to claim depreciation on buildings) by the current government there is an ever-growing burden on the New Zealand tax payer. Almost every business and household has reduced spending and debt in these difficult financial times and the government should have done the same.

Surely we can remember last time we spent-up large and borrowed big (also under a National government) and we ended up selling off our assets to foreign interests. If we don't do something now the same thing is going to happen all over again. It is time for some long term thinking. We need an

approach to government that is honest about the challenges ahead and willing to make some hard decisions for the benefit of everyone in New Zealand.

We need your help to achieve a change. Please read through this booklet and see if you are thinking the way we are and if so, help us move toward a better NZ.

I invite you to join us... I invite you to vote for us.

Kindest Regards

Colin Craig

On behalf of the Conservative Party team.



Colin and some of the Conservative Party team.



Who is Colin Craig?

Colin Craig is a New Zealander. He was born and raised in Auckland where he now lives with his wife and daughter. He has been a successful businessman, having started five businesses and his current company manages property worth 1.3 billion dollars.

He decided to get involved in the Auckland mayoral race in 2010 coming a creditable third behind the Labour and National candidates. He has been described as a determined conservative political activist.

The refusal of successive governments to be guided by citizen referenda and their failure to deliver on election promises and a desire for a better New Zealand has motivated him to take action. He has never aligned himself with a political party in the past and sees this election as a chance to make a positive difference.

www.conservativeparty.org.nz

HOW conservative? ARE YOU



Time is a precious thing and of course not everyone is going to be a conservative voter. So for the benefit of all readers here is a checklist of key principles and policies. You might like to check the boxes provided as you go and score your "conservative total" at the bottom.

AGREE DISAGREE NOT SURE

PRINCIPLES

Traditions and heritage are of real value. Change to alliances, laws and society should only be done after careful consideration and with the support of the people.

Thrift is a necessary characteristic of good government. Government should carefully use resources and in tough times will cut spending in preference to raising new taxes or increasing borrowing. The normal state of affairs should be a balanced budget.

Democracy is a foundational principle of a fair and decent society. Government should only proceed with changes to legislation with general support.

Community and family are the backbone of a fair and decent society. Government should support communities and families.

Long Term Thinking is essential. The decisions that we make and the things that we do become the inheritance of the next generation. Lets give them something we can be proud of.

GOVERNANCE

That **Citizens Initiated referendum** should be binding if 67% or more of votes cast favour the proposal.

That the **Marine and Coastal Act be repealed** and the foreshore and seabed returned to public ownership.

That the 2014 election referendum should include the following questions :

- > Should the number of members of parliament be reduced to 99.
- > Should New Zealand return to a single voter roll for all New Zealanders.
- > Should New Zealand adopt a 4 year Parliamentary Term.

ECONOMY

That the **Emissions Trading Scheme be repealed** and the carbon tax on electricity and fuel cancelled.

That the **sale of State Assets does not proceed.**

That New Zealand actively **pursue economic policy that encourages farming** (as the foundational business of our economy) and **new entrepreneurial businesses** (as future wealth generators and employers).

LAW & ORDER

That there be **tougher sentences for violent criminals** along with a requirement that they work and learn while imprisoned. In sentencing "life" imprisonment shall actually mean life imprisonment.

That there be **early and significant action** in cases of minor crime including restoration activity with a follow up programme.

SOCIETY

That the **ban on smacking be removed** with a return to parents being able to use reasonable force in correcting their children.

That the legal **drinking age be raised to 21** years of age.

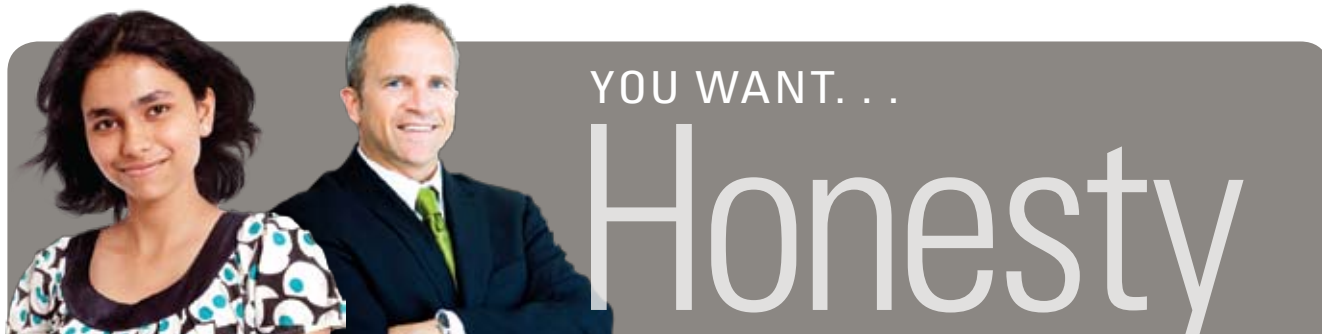
That welfare be reformed so that there is **no pay without work** and so incentives are toward working and couples staying together.

Non-political inquiry into family breakdown and growing child abuse with recommendations on what can be done to improve family life, stability and child welfare.

YOUR CONSERVATIVE TOTAL

19

If you score 10+ we need your support.



YOU WANT...

Honesty

You want leaders that never forget they are employed by you. You want fewer politicians, more honesty and action not excuses. You want a New Zealand that is about equality and unity, not division.

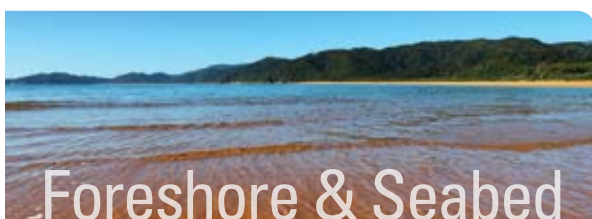
Binding Referenda

The last referendum (to change the anti-smacking law) established clearly the need for referendum to be binding if they are going to be effective. 87% of voters wanted a law change and yet the law remains unchanged and in the meantime, genuinely good parents are being investigated, in some cases their children removed, and some have even been prosecuted and convicted through the courts.

More people voted for the law change than voted for the Prime Minister yet to no effect. It is time to review the citizens initiated referenda legislation and update it. Specifically questions should be simply worded in the affirmative and where 67% of votes cast support the proposal this should be binding on Government.

“What this country needs are more unemployed politicians.”

EDWARD LANGLEY



Foreshore & Seabed

Against the wishes of the public, the current Government has proceeded with the Marine and Coastal Area Act, introducing a new concept of “customary property rights”. Subsequently the 2011 budget allocated funding to enable claims to these rights to be made. This will do nothing to enhance race relations in this country, and indeed will be to the long term detriment of our country. Our vision is one of all New Zealanders working together as equals. Ownership of the foreshore and seabed should be vested in the Crown (“Crown Ownership”) on behalf of all New Zealanders.

In respect of Maori claims, generally where Maori (or anyone else's) rights have been infringed they should always have the right to take the matter to court. The possibility to now “negotiate” with Parliament directly is a disturbing departure from the principle that courts are the proper place to have matters of justice heard and decided.

Real Questions to Ask at Election Time 2014

In this election and then potentially as a follow up in 2014, voters will be asked to have input into the way that we elect our Members of Parliament. Unfortunately we are being asked only to input on the single issue of the voting method. There are in fact other key questions that New Zealanders would like to address.

Firstly the public of New Zealand has already directed the government (in the 1999 referendum) to reduce the number of MPs. 84% of voters wanted the number of MPs reduced to 99 but instead we have a record number of 122 MPs at this time!

Secondly, the Royal Commission on the electoral system recommended that the Maori seats should be abolished and New Zealand return to a single electoral roll for all New Zealanders. We need to work and live together not separately.

Thirdly, there is the chance to consider a 4 year electoral term. The value of a longer electoral term is that it promotes longer term thinking and reduces election costs (a cost once every four years rather than three). With Binding Citizens Initiated Referenda the public have a mechanism to hold government to account during the four year period if required. It really is harmful to good governance to have an election campaign every three years instead of four.

- Reduce the number of MP's to 99
- One electoral roll for all New Zealand
- 4 year electoral term

Local Government Amalgamations

It is a clear democratic principle that no change to governance should occur without a mandate of the people. We do not want a repeat of the Auckland Super City debacle where amalgamation has proceeded (at huge cost and with no measurable advantage) against the wishes of the people.

There needs to be a review of the Super City that gives residents the option to reverse amalgamation if that is what they wish.

YOU WANT...

Safety



You want your family to be safe. You want justice for victims of crime and tougher action against violent offenders. You want proactive initiatives to reduce offending.

In this country there has been a steady trend away from traditional thinking on Law and Order.

Not only is the problem of crime increasing but the level of violence is also increasing. We the people (92%) made it clear to Government in the 1999 referendum that we wanted a much tougher stance taken against violent criminals. We have seen some minor changes subsequently but it simply falls short of what New Zealanders want.

That a murder can be committed and the offender get a paltry 11 or 12 years in prison should rightfully make us angry as does the early release of violent offenders who then do harm all over again. We are falling well short of doing right by the victims of crime in this country.



This is the age old representation of the "lady of justice" which summarises well the principles of a good justice system.

The Scales - Restoring the Balance

When someone commits a crime they have a moral duty to put this right. It is not enough to simply apologise. They must also make good what they have done. As an example let's say Bill steals \$1000 from Jane and is caught. He now

has an obligation to put this right. Firstly he needs to repay Jane the \$1000 and then cover the cost of his capture and finally he has some penalty or punishment to pay (so he learns that "crime does not pay"). It is entirely appropriate and proper to compel Bill to work to pay off his debt to Jane and society. Once he has cleared the debt he has restored the situation to rights and is free.

People with common sense understand this. It is really no different than parenting. If your child breaks a window they have to fix it, if they mess up the floor they clean it, etc. It's a simple case of the consequence being put right. But we have lost the plot entirely when it comes to violent crime. Somehow a murder can be committed and the person walk away after 11 or 12 years. If they took a life then they should work their own life to pay back the victim's family and society for the crime. It's simple and fair that a "life" sentence should mean life.

The Blindfold - No Favoritism, No Excuses

True justice must be blind to the status of the offender. There are no special favours - if the crime is committed then the price must be paid. It is simply not good enough to argue a character flaw, a bad upbringing, hard times or any other of a myriad of excuses. If the crime was committed then the price must be paid.

The Fence at the Top of the Cliff

One of the unique principles of the Conservative Party is forward thinking. So it's not just about addressing the criminal activity taking place now but also looking at what can be done to reduce criminal activity in the future.

We already know that there are environmental and personal factors that make a person more likely to commit a crime. For instance it is rare for a person raised in a stable family, with good connection to the community, reasonable literacy, and who is not under the influence of drugs or alcohol to commit a crime. It is also rare for a person's first crime to be violent in nature. It is usually a progression from minor offending to more serious offending.

It used to be that we could rely on parents to raise law abiding children and the community at large to act as a safety net for the few that fell through. This is just simply not the case anymore.

This makes early and effective intervention very important.

There are various success stories from other countries that have managed to reduce offending. Some of these are adopting a "broken window policy" where even minor crimes are treated very seriously to scare first time (and usually juvenile) offenders away from crime, while others used a more "holistic" approach of identifying and working with at risk youngsters and their families. Regardless of method the simple fact is that the earlier the intervention in a person's life the greater the chance of keeping them away from criminal activity. The longer the problem is left unaddressed and the longer the association with other troublemakers the less chance there is to correct behaviour.

Doing nothing and picking up the pieces later will appeal to short term thinkers but really resources need to be committed to early intervention and the sooner the better. To divert one person from a life of crime is to avoid great cost and misery so it is simply a sound investment.



LAW & ORDER



YOU WANT...

Prosperity

You want to worry less about money. You want a country of opportunity in which the average family is getting richer not poorer. You want a plan that leads to prosperity.

HOME OF THE New Zealand Farmer

Farming the Foundation of our Economy

New Zealand is a world leader in farming. We have lots of land, a great climate, and farmers with skills second to none. The vast majority of our export receipts are derived from farming exports and success in the farming industry influences the wider economy for the better, right across the board. Economic policy must be developed that maximizes our farming potential and especially as regards exports.

Emissions Trading Scheme (How to "shoot yourself in the foot")

The Emissions Trading Scheme is a great example of how not to help an economy. A tax that sees the everyday person paying more for power and fuel, and that, over time, escalates



in having a larger economic impact. Very importantly it directly raises the costs to our businesses while our three main trading partners have no such scheme. We are choosing to trade at a disadvantage which is just plain stupid.

There is of course, much scientific debate over the effect of human activity on the environment and views range from it having "little or no impact" to the "end of the world" scenario. However, what is agreed on is that New Zealand reducing emissions has little or no impact on a worldwide scale.

We should get rid of this tax immediately, resulting in cheaper fuel and electricity across the board and especially for our producers.

“ Success does not consist in never making mistakes but in never making the same one a second time. ”

GEORGE BERNARD SHAW

State Assets - Revenue Earners we Need to Keep

Economic times are tough. We are borrowing too much and spending too much. The answer is not to sell off those businesses the tax payer still owns to cover the deficit. It's short term thinking that will see highly profitable state owned assets end up in the hands of foreigners who have profited very nicely from the last time we did this.

Successful business people are very aware of the need to protect revenue streams (especially in tough times) and that it is smart to take a long term view. We need the revenue streams that these assets provide to work our way back to economic prosperity, aside from which, it is clearly preferable that profits from banks and power companies remain in New Zealand rather than ending up offshore.



New Zealand Home of the Entrepreneur

Although farming provides a solid foundation for the economy it cannot alone provide the wealth that we need to run a fair and decent society. We need to develop new sources of income if we are going to meet the rising costs. We are a small country. To maintain existing infrastructure, constructed in wealthier times is difficult let alone contemplate new investment.

In a presentation earlier this year New Zealander of the Year, Sir Paul Callaghan, addressed this problem and concluded that New Zealand requires 100 Entrepreneurs with 100 new businesses. If we can achieve this we can in fact turn the economy around and start becoming a more prosperous nation.

The Conservative Party believes that the developing of new exporting businesses is the way forward. Taxing existing incomes to redistribute them is a circular activity that will not make any real difference in the long run. As a nation we need an economic plan toward prosperity. The Conservative Party will develop and adopt policies to attract and keep entrepreneurs running businesses in New Zealand.

Economics - Long Term Plan and Growth

Real income (excluding benefits) has for the majority of New Zealanders been declining since 1987. We are as a nation generally becoming poorer. A lot of talk has been about Australia and their steady improvement. At one time New Zealand did outperform Australia economically but now the gap steadily grows and we fall behind. We can do better.

To improve financially a country needs to focus on two things:

1. More money coming in: New Zealand needs a long term financial plan based on sound financial logic to promote and encourage growth. We need to produce goods to export (or replace goods we import) and, even better if we can do this by innovation, and produce high value added exports. The removal of incentives for Research and Development does not help here – high quality accountable research needs to be encouraged for long term gain.
2. Less money going out: We need careful expenditure that results in us getting the best value for each dollar spent. Also expenditure needs to be focused on long term outcomes not merely immediate need.

To develop a successful long-term plan we are going to have to talk honestly about the situation we face. As an example, while it might be politically convenient to defer consideration of changes to Superannuation it is not beneficial. It is obvious that changes need to be made and other countries (such as Australia and the UK) are already making these changes. The economic reality is that we need to start a gradual increase in the age of eligibility to be able to fund retirement incomes in the future.

We can do better.

Also there will have to be spending cuts to balance the books. You simply don't find your way back from a \$17 billion deficit without it. Think about it this way: currently the Government is overspending by \$200 per week per household. I doubt that households have an extra \$200 a week to pay in tax and it is not right to pass this onto our children to pay. Government has a budget just like a household and just like an individual. Budgets should be balanced and if you can't afford it then you need to spend less.

Debt and Borrowing

Things have not been going well as the current leaders have followed the trend of big spending and big borrowing.

Our country needs to invest, but it does not need to go into debt to do that.

Investing is putting aside something for the future. It's old fashioned thinking but the motto "save some, spend some" is smart and, frankly, it's those who invest that are more successful in life.

Debt is the opposite. When you borrow money you are taking away from the future. As an additional negative you are also paying interest and limiting your freedom to make decisions. We don't need to tell you about how debt gets people/cities/countries into trouble, as there are so many examples. We probably all know someone in difficulty because of debt.

Very simply, we do not support New Zealand going deeper into debt (with the single exception of self-funding bonds for infrastructure). It is time for us to balance the budget by spending only what we have. This may sound radical in

today's "borrow up big" society but it is the best long term approach to smart money management.

It really is time to say goodbye to the big spenders and adopt a responsible and debt-free approach.

“ Debt is the worst poverty. ”

THOMAS FULLER

Currently debt continues to increase and Standard and Poors have us on a negative rating.

New Zealand Government debt rising

YEAR	GOVT DEBT AS % OF GDP
2007	17.4%
2008	20.3%
2009	26.1%
2010	31.6%

Source: Standard & Poor's (long-term credit & outlook); International Monetary Fund (debt)



YOU WANT...

Family

You want happy families where parents are empowered to raise their children in a loving environment. Families where the parents, not the government, are in charge.

Families - The Foundation of Society

A society is only as strong as its families. The family is the natural relationship structure that we all begin with. It provides the "home base" and the "launching pad" into adulthood. Great families are the backbone of a great nation. It is troubling therefore to see increasing family breakdown and relationship failures. In truth these failures have significant bearing on whether a young person succeeds in life. There is a lot of cost and personal anguish when relationships fail.

Some commentators were rather surprised when the Conservative Party in the UK introduced state funded marriage counselling. They should not have been as it makes sense to invest into successful relationships if possible. Counselling is a small cost compared to the social bill down the track of a broken home.

We must also face the fact that New Zealand is becoming a far more dangerous place for the very young. Dysfunction in families puts the young at risk and child abuse is a real problem with nearly one child death per month as a result of abuse. It is a tragedy that cannot be allowed to continue.

The Conservative Party supports a non-political inquiry into family breakdown and child abuse in New Zealand to obtain policy recommendations on how to halt and reverse these trends.

Total Support for Parents

It is nothing but insulting to parents that we now have a law that has taken away the ability for a parent to use reasonable force in disciplining and controlling their child. Worse yet actually to see good parents suffering due to this legislation. It's time to get back to common sense and acknowledge that reasonable force is necessary and beneficial for some children. It would be difficult to find a parent that hasn't at some time needed to use reasonable force to effectively control or discipline their child. 87% of voters in the referendum know this law needs to change. The politicians have this entirely wrong but the people don't.

Also in support of parents, we should fix the anomaly that exists regarding abortion procedures for minors. A parent has to approve everything else in a child's life (including a day off school) but somehow not this. Parental consent should be consistently required for all medical procedures carried out on children.

Parents are some of the most important people in our nation. They are raising the future. What parents need is good support and resources so they get help when needed.

“The universal brotherhood of man is our most precious possession.”

MARK TWAIN

It Takes a Village to Raise a Child - Backing Communities

If you think about your own life, you will be able to think of a few key persons who greatly helped you in life. These are your heroes, the people who for you made a real difference. Very rarely are these people government officials, instead they are people you connected with in a smaller community. It is these communities, families, churches, sports clubs, cultural groups, performing arts groups and so on that provide real connection and enjoyment for people. Often the answers to problems in our society lie within the community.

More often than not it is local and community initiative that can provide help and provide assistance to those in need in society. Government needs to be supportive of communities and be prepared to support community projects. They are almost

always a more cost efficient way of providing social services than government departments. It's about funding programmes with results and not funding those that fail.



Welfare

In 1960 only 2% (1 in 50) of the working age population were receiving a benefit compared with around 10% (1 in 10) by April 2008, and this has now risen to 13%. The trend is disturbing. Research has established that those on benefits (and especially children in benefit dependent households) have lower living standards and poorer life outcomes. Welfare has become for many a cycle of dependency from which they cannot escape. Currently a staggering 222,000 children are growing up in benefit dependent households (more than ever previously) and the long term impact of this will be substantially negative for our country both in terms of cost and social detriment. When you consider the long term future, it is clear that this has to change and welfare reform is immediately necessary to ensure that a short term hand-out does not become a lifestyle of living on a "hand-out".

It is also currently the case that welfare payments discriminate in favour of unmarried single persons. It is time and long overdue to remove this bias so that committed couples (who statistically provide for better social outcomes) are not penalized.



Community Wage & Training

Before making further comment it is worth reminding ourselves that work is a good thing. Research shows that working people on average have better health both physical and mental, as well as developing better character and building better relationships. The productive interaction with others that takes place in a work environment is a good thing personally and for the country.

You object to the welfare system trapping an ever increasing number of people and want reforms that will restore people to work and dignity.

Work Must Pay

At the moment there are government benefits that provide a better financial return than actually going to work. It seems very obvious that this is the wrong incentive although nothing has been done to change it by the current government. For example, in 2008 despite 10% of the working age population being on benefits there was critical shortage of low skilled labour.

The Conservative Government in the UK has a simple principle "work must pay". Again it might be politically inconvenient for existing parties to address but the fact is the existing system has to be changed so that work is always the best option to take. Beneficiaries will choose to work if it is financially advantageous to do so.

“Opportunity is missed by most people because it is dressed in overalls and looks like work.”

THOMAS A. EDISON

Not having gainful employment is especially harmful to the young. The Conservative Party supports the introduction of a community wage scheme where those beneficiaries capable of working are required to turn up for work and training and get paid for doing so. Aside from maintaining a "go to work" habit it also provides additional support and training that many young or long term unemployed persons require in order to be able to start and keep working a regular job.

It simply isn't fair (or realistic) to expect those without skills to suddenly become workers. It is necessary to get alongside and help them learn the skills and habits that will enable them to have a successful working career. For those concerned about the short term cost can we remind you again to take the long term view. A person trained and helped into work is far more likely to be a net contributor to society in the long run.



Education : Parental Choice and Real life

There are many differing views on education and again we come back to the principle of supporting parents and trusting them to make the best choice for their children. The Conservative Party supports parents having choice of schools at a secondary level with funding to follow the child as it does at primary and tertiary education levels.

Additionally we believe that education needs to prepare children and young adults for real life. Life skills such as budgeting, time management and self discipline are real life skills that are often lacking in young people seeking work. Apprenticeships are essential not only for developing individual skills and work habits but also for ensuring a high standard of tradesmanship. The Conservative Party believes that the abandonment of the traditional apprenticeship models in the 1980's and 1990's has been detrimental for young people more mechanically minded, and supports initiatives to reintroduce and broaden trade apprenticeship programmes.



Drugs and Alcohol - Health and Safety first

Alcohol is doing great harm to our society. While not solely a problem of the young it is apparent that the young adults are more and more binge drinking and being caught up in violent and sexually promiscuous behaviours. Research shows two important things. Firstly, that the human brain continues to develop through to around the age of 24 and secondly, that even small alcohol intake damages this development permanently. The younger the age when consuming alcohol, the greater the damage done. There is no good argument for consumption of alcohol by young adults. Drinking from a young age is more likely to lead to addiction and anti-social behaviours that we all end up paying for.

The Conservative Party therefore has no hesitation in returning the drinking age to 21 years and lowering the blood alcohol limit for drunk driving. Additionally we support a similar approach, as has been taken with cigarettes, in that taxation of alcohol is appropriate to ensure that there are cost barriers to excessive use.

With regard to other drugs the current policy where party drugs can be sold until proven harmful is nonsense. History shows that indeed most do prove harmful and in some cases fatal. We support a policy that requires the distribution company to have tested and proven a drug "safe and beneficial" before it can be sold to the public (again with an age limit of 21).

You want a compassionate approach where the government provides quality support services should you need them.

PRE-SCHOOL EDUCATION

It's About Mothers

New Zealand now provides subsidised child care so mums can go to work. We have not considered the long-term consequences of this move. It's fact that quality time, baby with mother (or sometimes dad), in the early years is enormously significant for long-term development and provides for much better outcomes compared to child care facilities.

If we subsidise child care, let's offer the same financial support to mums who choose to stay at home with baby. Mothers need to be recognised as truly valuable in their role not just incentivised to head back to work.



“ A good mother is worth a hundred school masters. ”

GEORGE HERBERT



membership form



NAME/S :

TITLE FIRST LAST

☐

Tick if joint membership

TITLE FIRST LAST

RESIDENTIAL ADDRESS :

NUMBER STREET

SUBURB/TOWN CITY POSTCODE

CONTACT INFORMATION :

TELEPHONE - HOME MOBILE

EMAIL

PLEASE CONFIRM EITHER :

☐

I am/we are enrolled as a NZ parliamentary elector

OR

☐

I am/we are eligible to enrol as a NZ parliamentary elector

☐

I/we have paid my/our membership sub of \$ as per tear off slip below.

I authorise the Conservative Party of New Zealand to record my name as a financial member of the Conservative Party of New Zealand and the secretary of the Conservative Party of New Zealand to release this application form and subsequent financial membership details to the Electoral Commission for the purposes of the Conservative Party's registration under the Electoral Act 1993.

SIGNED :

PRIMARY APPLICANT SPOUSE/PARTNER DATE

MEMBERSHIP SUBSCRIPTION :

☐

Individual : **\$10**

☐

Couple : **\$15**

☐

Unwaged/Hardship : **\$2**

This part of the form will not be revealed to the Electoral Commission

REMITTANCE :

I have contributed :

\$

MEMBERSHIP SUB

\$

DONATION

PAYMENT BY :

☐

Cheque/Cash enclosed

☐

Credit Card :

CARD NUMBER :

☐

VISA

☐

MASTERCARD

NAME ON CARD :

EXPIRY DATE :

☐

Online Direct Credit :

PARTICULARS : *Membership*

CODE : *Name & Initial*

BANK ACC # : 12-3488-0002002-000

Non-essential Information : Submit for our records if desired.

PO BOX ADDRESS :

PO BOX SUBURB/TOWN

CITY POSTCODE

MEMBERSHIP NOT REQUIRED :

☐

I want to help.

☐

Please keep me informed.

(use the space above to fill in your name, address & email)

FOLD HERE

FOLD HERE



TAPE HERE



Every vote counts.

When you vote on Election Day (26th November 2011), make sure your vote will make a difference. It's important to remember that it's the party vote that determines the balance of who makes decisions for the country.

We are asking you to cast your party vote for the Conservative Party.

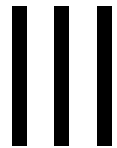
Every vote cast for the Conservative Party will count because Colin Craig can win a seat.

This is different from New Zealand First who can't win a seat. Many voters wasted their vote last election by voting New Zealand First. If you were one of those people we encourage you to vote for the Conservative Party to ensure your vote will count this time round.

Your vote is very important to us. Our country needs you to make the effort to vote again this election, so that we can get the country back to values that work.

Tick Conservative and make your vote count.

Freepost Authority Number 97486



The Conservative Party
PO Box 99638
Auckland 1149

- Crown ownership of Foreshore & Seabed.
- Keep our assets.
- Repeal the Emission Trading Scheme.
- Binding referenda.
- Remove the ban on light smacking.
- Get prisoners working.
- Alcohol reform - including the drinking age back to 21.



Party Vote

conservative

